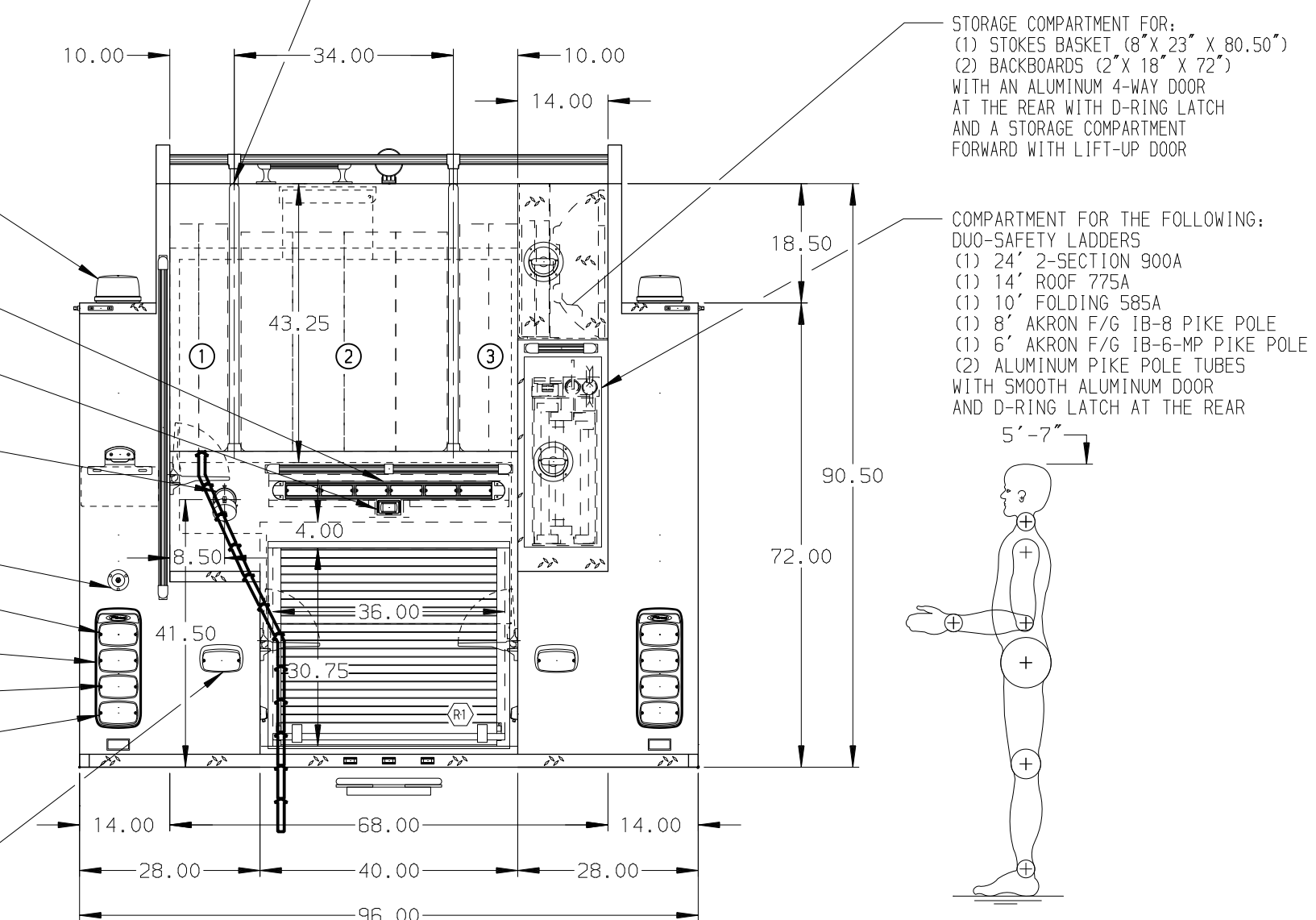


- HOSEBED CAPACITIES**
- ① 500' OF 2.50" D.J. HOSE
 - ② 1000' OF 5.00" D.J. HOSE
 - ③ 500' OF 2.50" D.J. HOSE



ALUMINUM BODY

NOTE
DIMENSIONS SHOWN ARE APPROXIMATE AND ARE SUBJECT TO MINOR DEVIATIONS AS MAY OCCUR OR BE NECESSARY IN CONSTRUCTION. MINOR DETAILS NOT SHOWN.

- 1. BATTERY CHARGER LOCATED BEHIND DRIVER SEAT
- 2. FOUR WHELEN 01-0660068-00 12V L.E.D. LIGHTS LOCATED IN THE HOSE BED
- 3. S/STL PROTECTIVE GUARD FOR ALL ROLL-UP DOORS
- 4. ONE FULL WIDTH/DEPTH PAINTED ADJUSTABLE SHELF IN COMPARTMENT D1, D2, D3, P1, P2 & P3
- 5. ONE ADJUSTABLE SLIDE-OUT TRAY IN COMPARTMENT D1, D3, P1 & P3
- 6. AMOR LUMBAR H20 AY-9500-040 40.00\"/>

| REV | DATE | BY | CH | ENFORCER |
|-----|------|----|----|----------|
| | | | | |

| | | | |
|--|---|------------|-----------|
| | | JOB NO. | 30424 |
| | | SCALE | DATE |
| CHASSIS DATA TITLE FOR MAKE PIERCE MODEL DWG NO. | 1500-D-750P W/20 GAL FOAM CELL, 152\"/> | DRAWN BY | 02AUG16 |
| | | CHECKED BY | 02AUG16 |
| 30424AD | | SHEET SIZE | SHEET NO. |
| 30424AD | | D | 1 OF 1 |