

**PASSENGER'S SIDE COMPARTMENTS CONTAIN THE FOLLOWING:**

**COMPARTMENT P1 CONTAINS:**

- (1) TRAY, FLOOR MOUNTED, SLIDE-OUT, STD. DEPTH COMPT, 500LB, 2.00' SIDES
- (1) SHELF, ADJUSTABLE, 500 LB CAPACITY, STANDARD DEPTH

**COMPARTMENT P2 CONTAINS:**

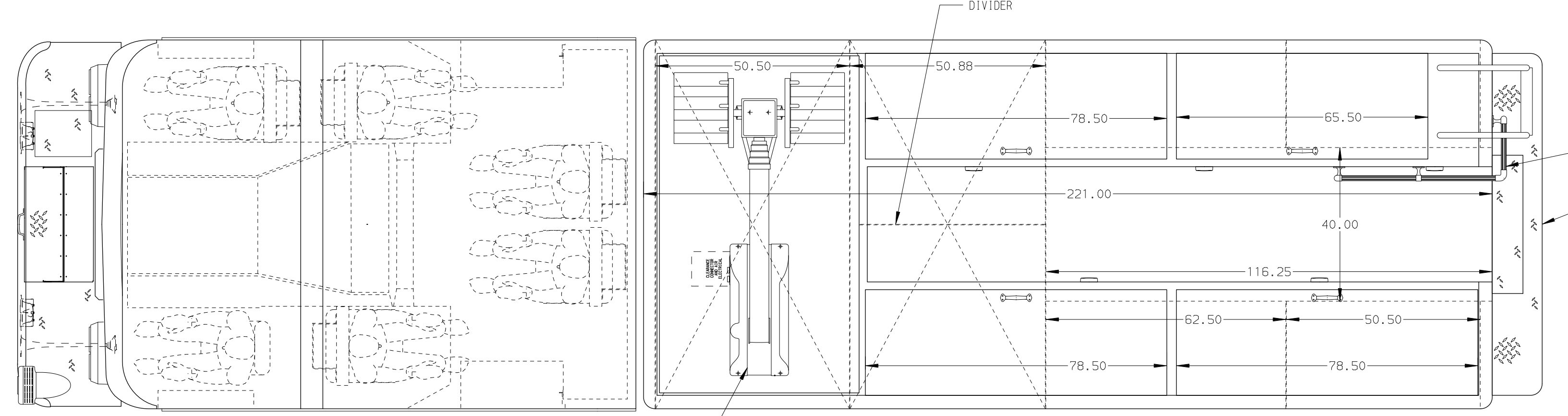
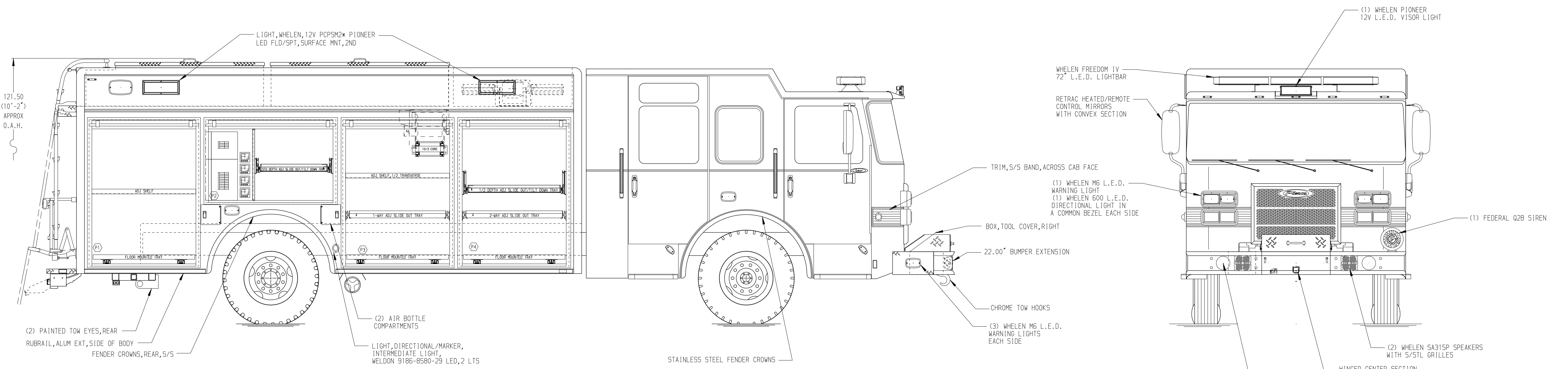
- (1) TRAY, 200 LB, TILT/SLIDE-OUT, 30 DEG, ADJUSTABLE, STD DEPTH COMPT
- (1) VERTICAL COMPARTMENT DIVIDER
- (2) CIRCUIT BREAKER PANELS

**COMPARTMENT P3 CONTAINS:**

- (1) TRAY, FLOOR MOUNTED, SLIDE-OUT, STD. DEPTH COMPT, 500LB, 2.00' SIDES
- (1) TRAY, 500 LB, SLIDE-OUT, 1-WAY, UTILITY, ADJUSTABLE HEIGHT, 1/2 TRANSVERSE
- (1) ELECTRIC CORD REEL WITH 200' OF 10/3 YELLOW CORD

**COMPARTMENT P4 CONTAINS:**

- (1) TRAY, FLOOR MOUNTED, SLIDE-OUT, STD. DEPTH COMPT, 500LB, 2.00' SIDES
- (1) TRAY, 200 LB, TILT/SLIDE-OUT, 30 DEG, ADJUSTABLE, 1/2 TRANSVERSE
- (1) TRAY, 500 LB, SLIDE-OUT, 2-WAY, UTILITY, ADJUSTABLE HEIGHT, FULL TRANSVERSE



**REAR COMPARTMENT CONTAINS THE FOLLOWING:**

**COMPARTMENT R1 CONTAINS:**

- (1) TRAY, FLOOR MOUNTED, SLIDE-OUT, STD. DEPTH COMPT, 500LB, 2.00' SIDES
- (1) TRAY, 500 LB, SLIDE-OUT, 1-WAY, UTILITY, ADJUSTABLE HEIGHT, 110" DEEP
- (1) RACK, STOKES/STRETCHER BASKET, HORIZONTAL TROUGH

**DRIVER'S SIDE COMPARTMENTS CONTAIN THE FOLLOWING:**

**COMPARTMENT D1 CONTAINS:**

- (2) TOOLBOARDS, SLIDE-OUT, ALUM, .188", PEG BOARD, STD. DEPTH

**COMPARTMENT D2 CONTAINS:**

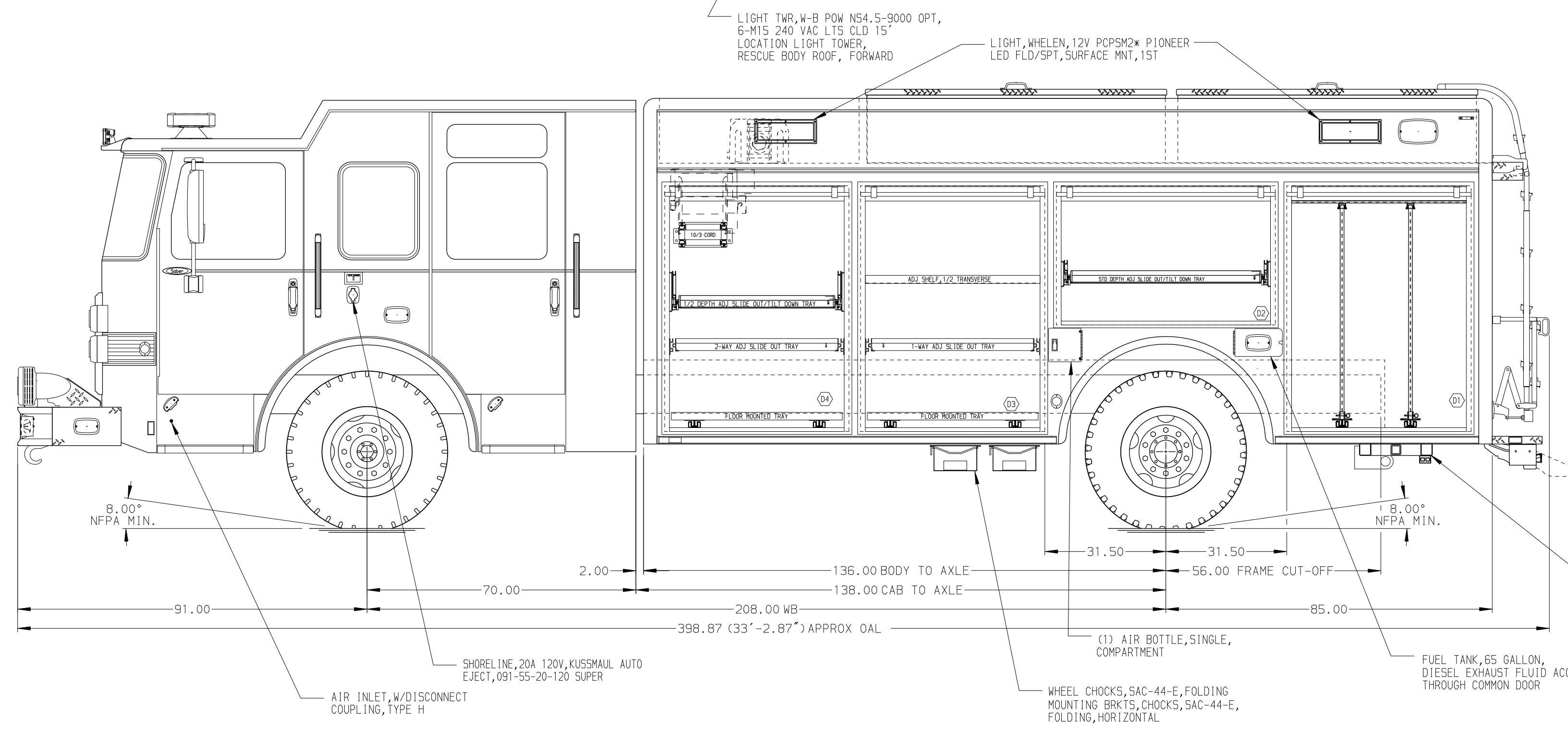
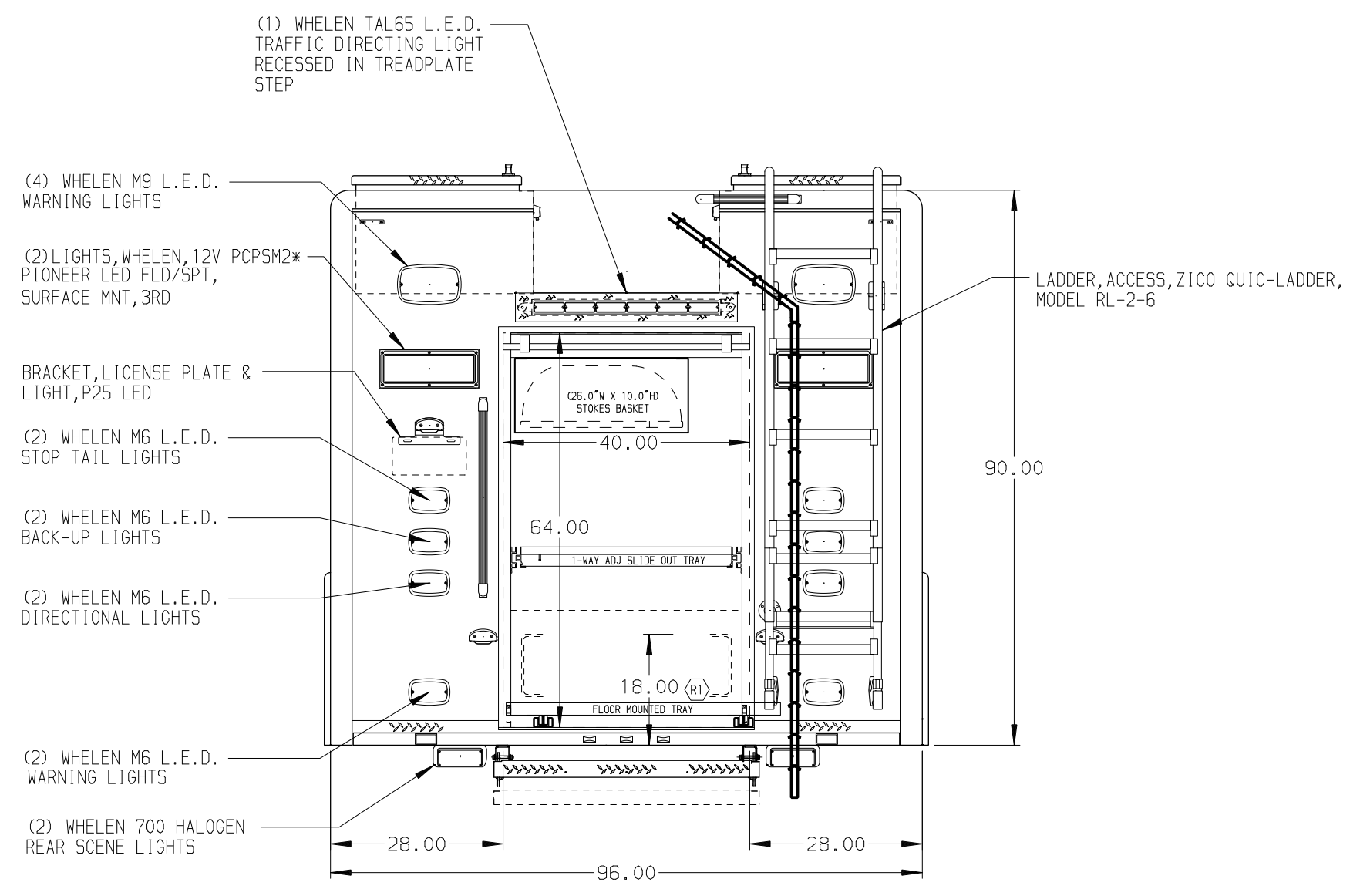
- (1) TRAY, 200 LB, TILT/SLIDE-OUT, 30 DEG,

**COMPARTMENT D3 CONTAINS:**

- (1) TRAY, FLOOR MOUNTED, SLIDE-OUT, STD. DEPTH COMPT, 500LB, 2.00' SIDES
- (1) TRAY, 500 LB, SLIDE-OUT, 1-WAY, UTILITY, ADJUSTABLE HEIGHT, 1/2 TRANSVERSE

**COMPARTMENT D4 CONTAINS:**

- (1) TRAY, FLOOR MOUNTED, SLIDE-OUT, STD. DEPTH COMPT, 500LB, 2.00' SIDES
- (1) TRAY, 200 LB, TILT/SLIDE-OUT, 30 DEG, ADJUSTABLE, 1/2 TRANSVERSE
- (1) TRAY, 500 LB, SLIDE-OUT, 2-WAY, UTILITY, ADJUSTABLE HEIGHT, FULL TRANSVERSE
- (1) ELECTRIC CORD REEL WITH 200' OF 10/3 YELLOW CORD



**NOTE**

DIMENSIONS SHOWN ARE APPROXIMATE AND ARE SUBJECT TO MINOR DEVIATIONS AS MAY OCCUR OR BE NECESSARY IN CONSTRUCTION. MINOR DETAILS NOT SHOWN.

		<b>Pierce MANUFACTURING INC.</b>		JOB NO.	30647
				SCALE	1:24 DATE
		CHASSIS DATA		TITLE	HEAVY DUTY RESCUE, 18.50' BODY NON-WALK-IN
		MAKE		FOR	PIERCE STOCK
		MODEL		DWG NO.	30647AD
REV	DATE	BY	CH	SHEET NO.	D 1 OF 1