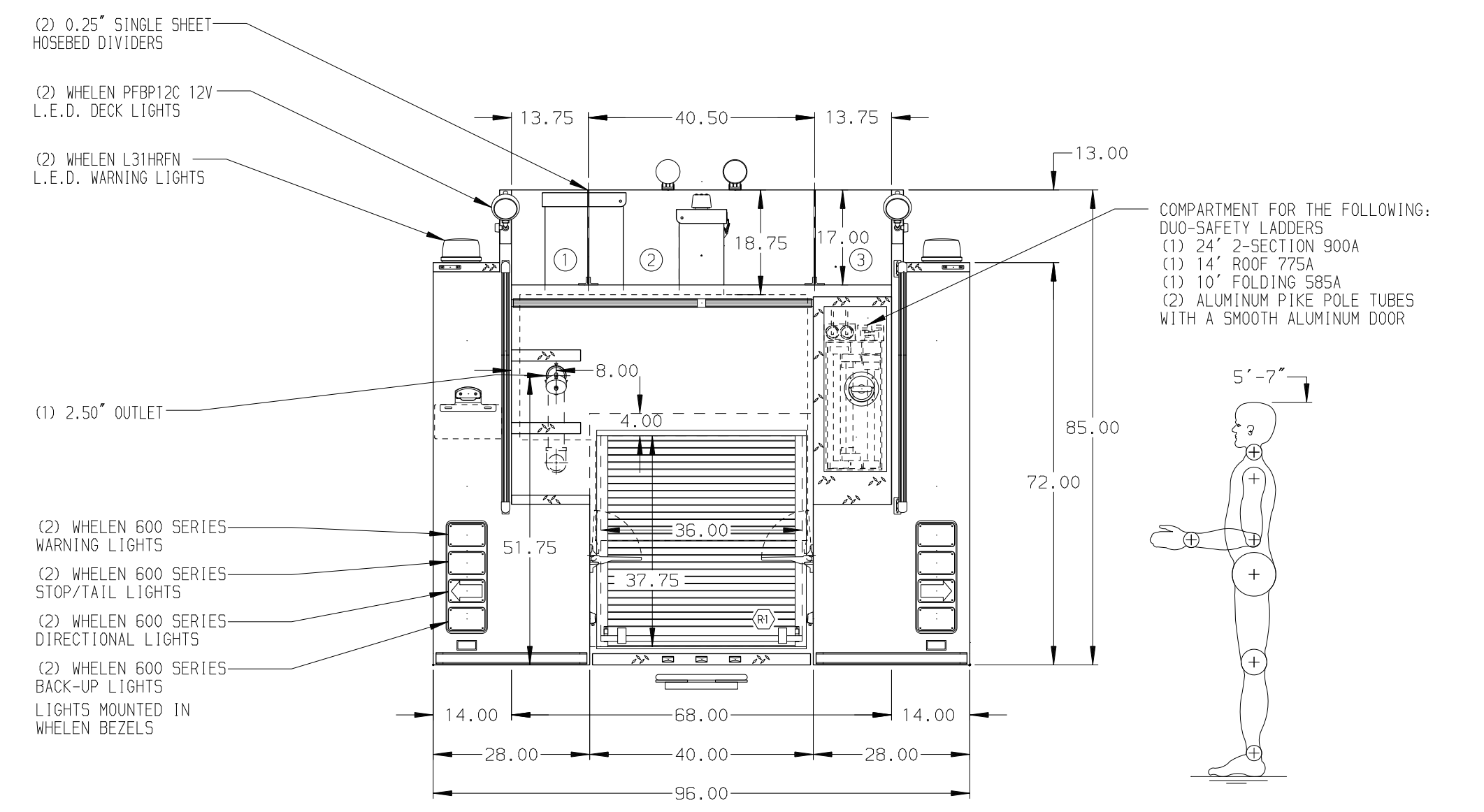


HOSEBED CAPACITIES

① 500' OF 2.50" D.J. HOSE

② 1000' OF 5.00" D.J. HOSE

③ 500' OF 2.50" D.J. HOSE



ALUMINUM BODY

NOTE
DIMENSIONS SHOWN ARE APPROXIMATE AND ARE SUBJECT TO MINOR DEVIATIONS AS MAY OCCUR OR BE NECESSARY IN CONSTRUCTION. MINOR DETAILS NOT SHOWN.

CHASSIS DATA	TITLE	1500-D-780P, 750 GAL WATER W/ 30 GAL FOAM SYSTEM	JOB NO.	31500
MAKE	FOR	PIERCE FIELD UNIT BRADENTON, FLORIDA	SCALE	1:24
MODEL	DWG NO.	31500AD	DRAWN BY	RWI
REV	DATE		CHECKED BY	CAG
			SHEET SIZE	D
			SHEET NO.	1 OF 1

