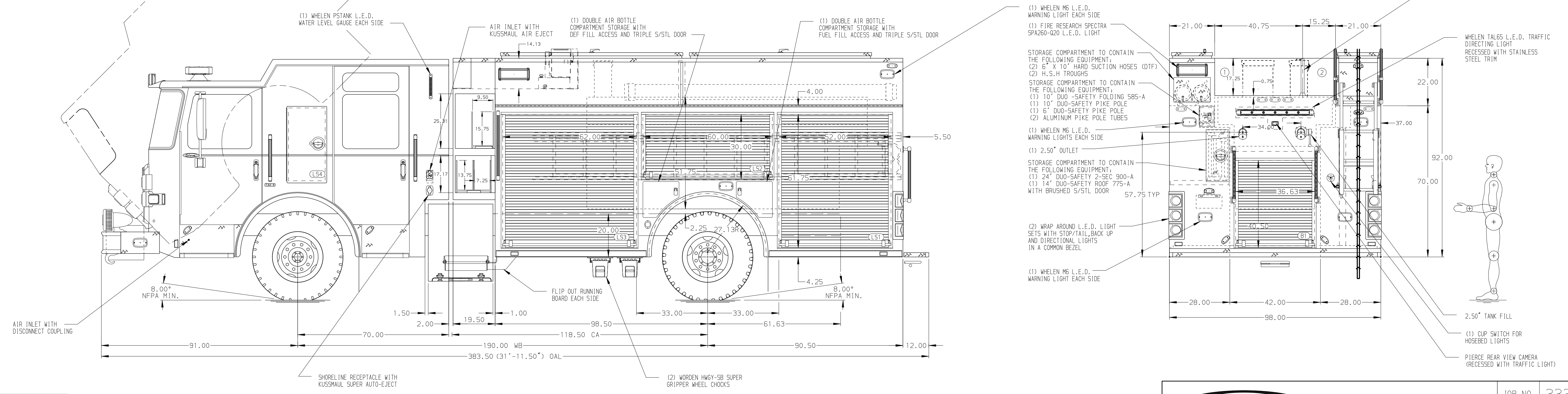


HOSEBED CAPACITIES

① 1000' OF 5.00" D.J. POLY HOSE

② 400' OF 3.00" D.J. POLY HOSE



ALUMINUM BODY

NOTE
DIMENSIONS SHOWN ARE APPROXIMATE AND ARE SUBJECT TO MINOR DEVIATIONS AS MAY OCCUR OR BE NECESSARY IN CONSTRUCTION. MINOR DETAILS NOT SHOWN.

- BATTERY CHARGER LOCATED IN COMPARTMENT RS3
- BATTERY CHARGE INDICATOR LOCATED ON DRIVER'S SEAT RISER
- DUAL L.E.D. LIGHT STRIPS LOCATED IN HOSE BED
- ONE FULL WIDTH/DEPTH ADJUSTABLE SHELF IN COMPARTMENT RS1 & LS1 TWO IN RS3
- ONE FLOOR MOUNTED SLIDE-OUT TRAY IN COMPARTMENT RS1
- ROSCO DV440 CAMERA THROUGH THE WINDSHIELD

REV	DATE	BY	CH	ENFORCER
1	18MAR19	MMF	PJP	MAKE
2	28FEB19	MMF	PJP	PIERCE
3	11JAN19	MMF	NPE	MODEL

		JOB NO.	33359
		SCALE	DATE
TITLE	1500-D-1030P, 1000 GAL WATER, W/30 GAL FOAM, 189" RESCUE PUC, (3) XLAYS, LADDERS THRU BODY, DELUGE	DRAWN BY	MMF
FOR	BIG RAPIDS CITY DPS BIG RAPIDS, MICHIGAN	CHECKED BY	NPE
DWG NO.	33359AD	SHEET SIZE	SHEET NO.
		D	1 OF 1