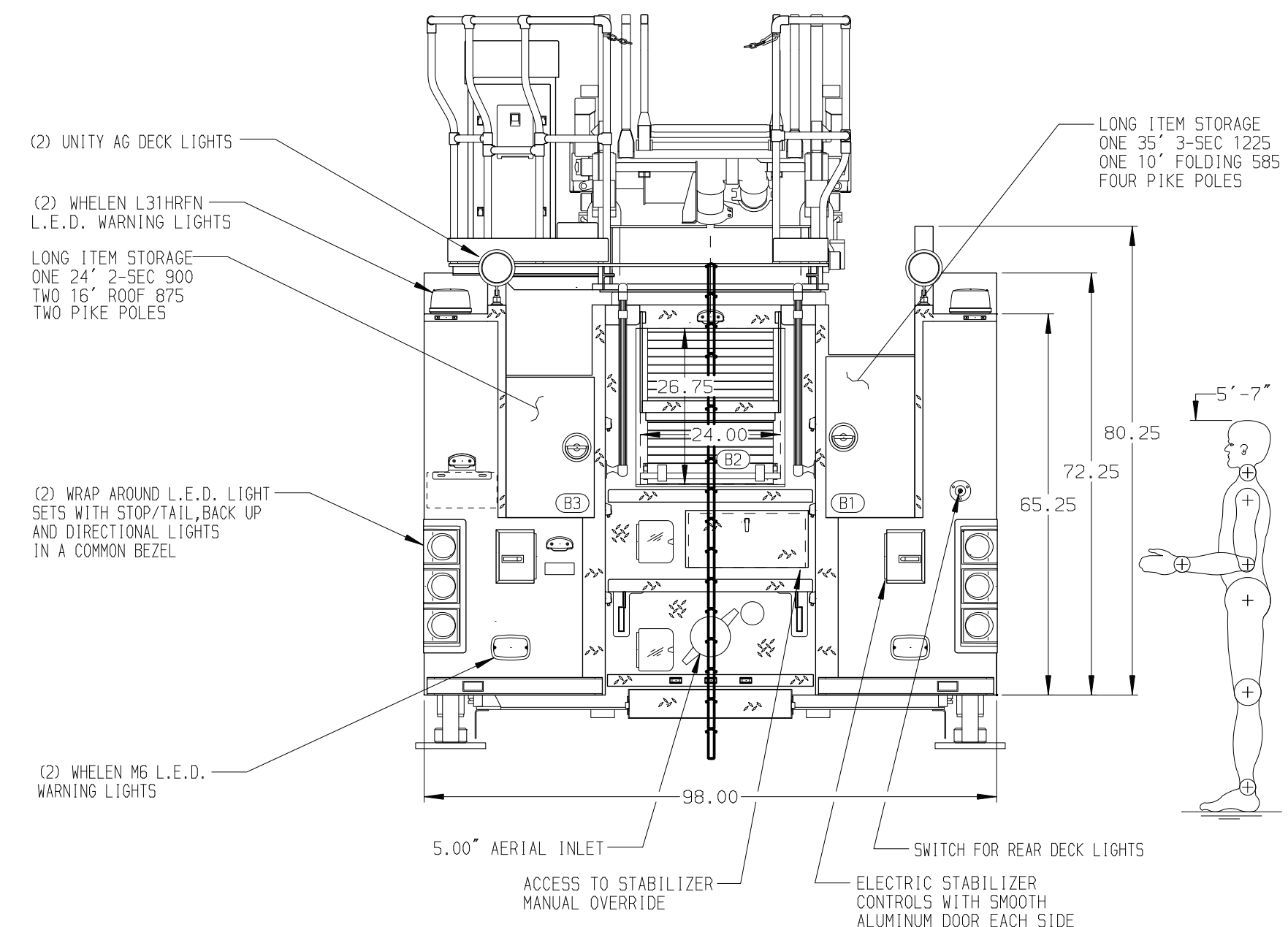


BODY	WATER TANK
75' HAL Aluminum Body	500 Gallon Poly Water Tank
COMPT, LEFT SIDE FRONT	Foam System
Full Height RollUp Forward	Plumbing for Future Husky Foam System
COMPT, LEFT SIDE REAR	Foam Cell
Full Height RollUp Rearward	Foam Cell Not Required
COMPT, RIGHT SIDE FRONT	
Full Height RollUp Forward	
COMPT, RIGHT SIDE REAR	
Full Height RollUp Rearward	



CHASSIS	CAB	AXLE, FRONT, CUSTOM	TRANSMISSION	PUMPHOUSE	CROSSLAYS, 1.50"	SPEEDLAYS	CUSTOMER APPROVAL		JOB NO.
Enforcer Chassis ENGINE 400 HP Cummins L9 Engine	7000 Enforcer Cab BUMPER 19" Extended Stainless Steel	20,000 Lb D-2000F Axle AXLE, REAR 33,500 Lb Meritor Axle	Allison 5th Gen, 3000 EV5 P	45" Control Zone Side Mount PUMP 1500 GPM Waterous CSU	(2) 1.50" Standard Capacity CROSSLAYS, 2.50" 2.50" Crosslay Not Required	Speedlays Not Required GENERATOR Generator Not Required	APPROVED BY: _____ DATE: _____		33587
NOTE DIMENSIONS SHOWN ARE APPROXIMATE AND ARE SUBJECT TO MINOR DEVIATIONS AS MAY OCCUR OR BE NECESSARY IN CONSTRUCTION. MINOR DETAILS NOT SHOWN.									SCALE 1:24
1. ONE 1.50" OUTLET WITH 2.00" PIPING AND SWIVEL LOCATED IN CENTER BUMPER TRAY 2. SHORELINE RECEPTACLE WITH KUSSMALL SUPER AUTO-EJECT LOCATED ON DRIVER SIDE OF THE CAB 3. AIR INLET WITH DISCONNECT COUPLING IN THE DRIVER SIDE STEPWELL 4. BATTERY CHARGER LOCATED IN COMPARTMENT PER SHOP ORDER 5. BATTERY CHARGE INDICATOR LOCATED PER SHOP ORDER 6. FOUR ADJUSTABLE SHELVES IN COMPARTMENTS PER SHOP ORDER 7. 7.00" AERIAL LIMITED RETRACTION 8. 1.50" RAISED AERIAL PEDESTAL 9. 1500 GPM HIGH FLOW WATERWAY 10. TRIDENT FOLDING STEPS ON AERIAL DEVICE									DATE
Pierce MANUFACTURING INC. TITLE: 75 AERIAL LADDER & BODY ASSEMBLY MAKE: _____ FOR: PIERCE FIELD UNIT MODEL: _____ DWG NO.: 33587AD APPLETON, WI									DATE
REV - - - DATE BY CH ENFORCER									DRAWN BY: LWE CHECKED BY: THS SHEET SIZE: D SHEET NO.: 1 OF 1