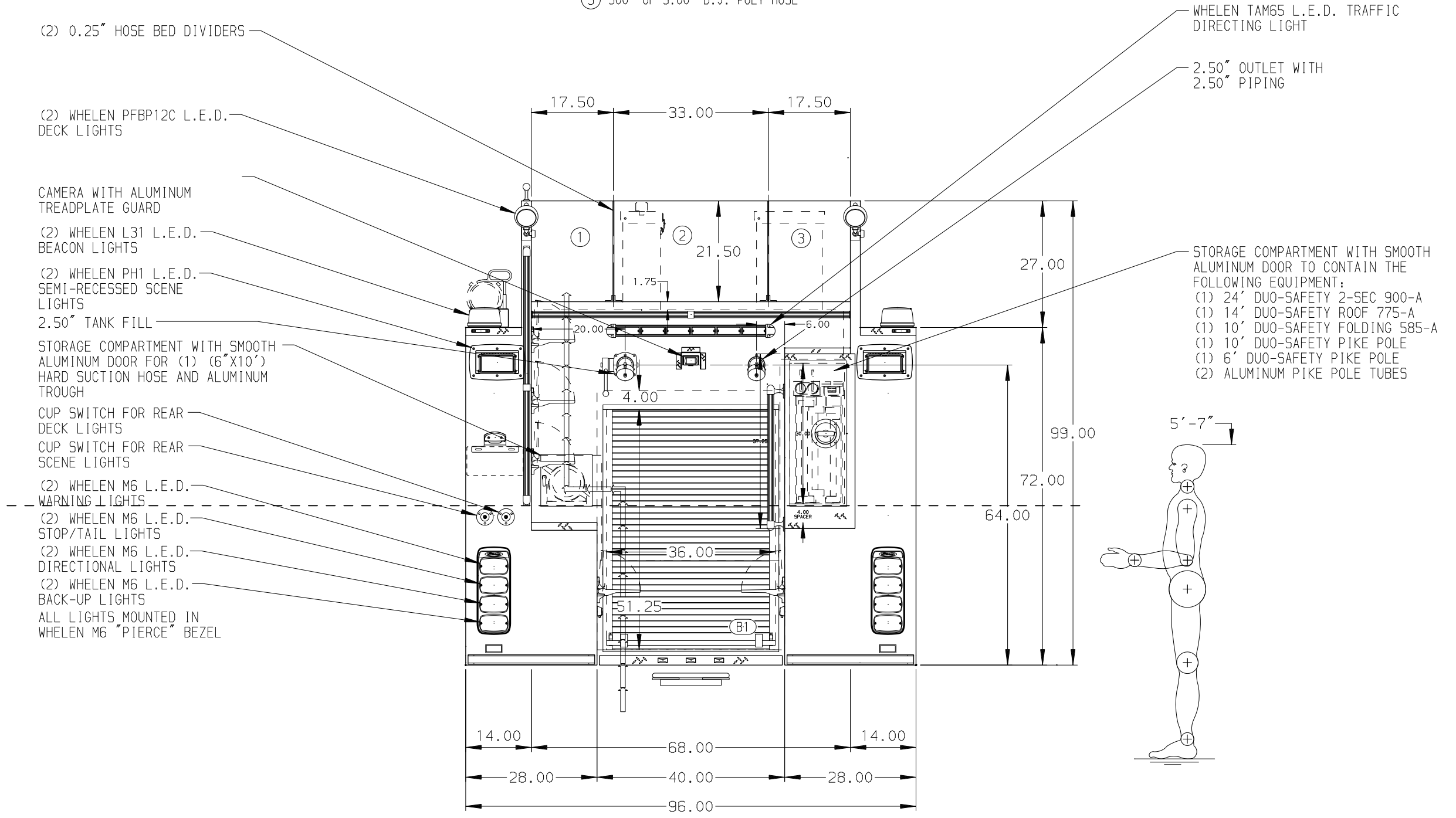
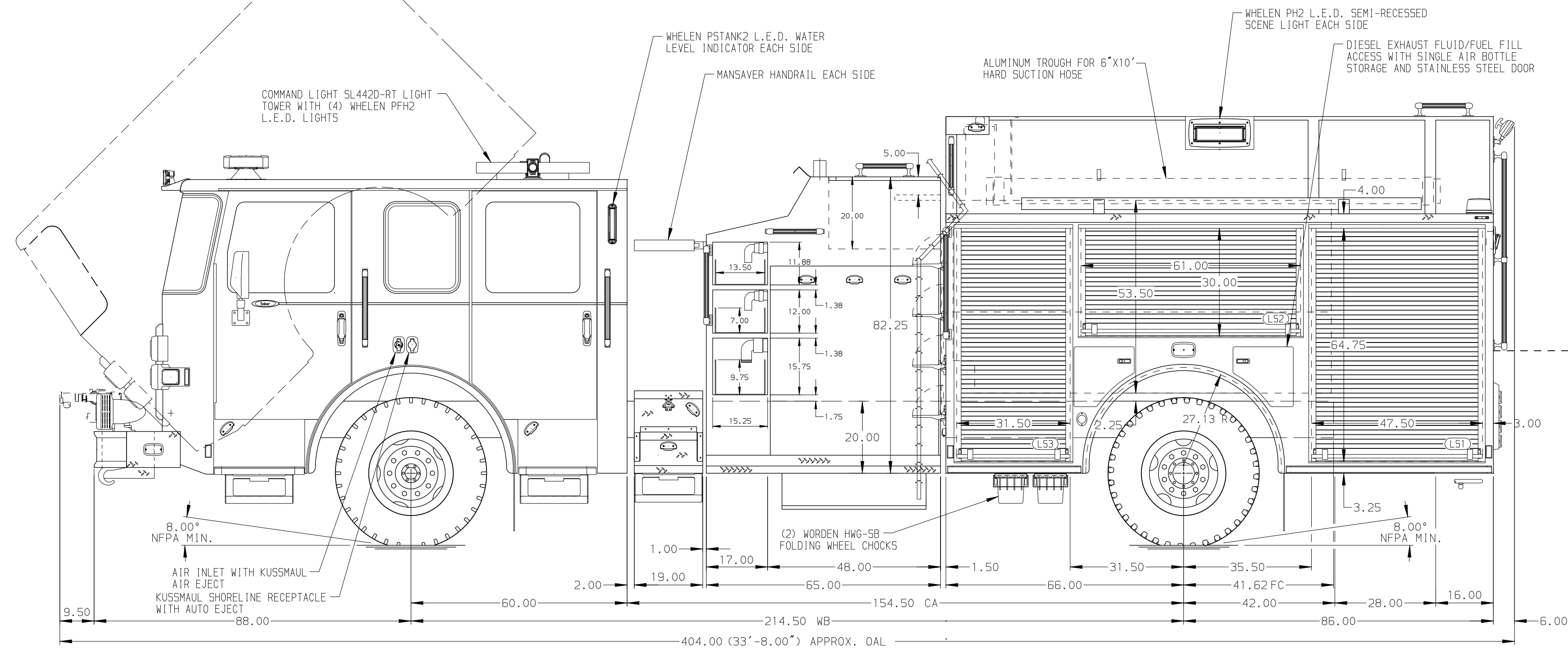


- HOSEBED CAPACITIES
- ① 500' OF 3.00" D.J. POLY HOSE
 - ② 1000' OF 5.00" D.J. POLY HOSE
 - ③ 500' OF 3.00" D.J. POLY HOSE



STAINLESS STEEL BODY MAXIMUM O.A.L. 408.00"

NOTE
DIMENSIONS SHOWN ARE APPROXIMATE AND ARE SUBJECT TO MINOR DEVIATIONS AS MAY OCCUR OR BE NECESSARY IN CONSTRUCTION. MINOR DETAILS NOT SHOWN.

				CHASSIS DATA	TITLE	1250-D-1000P W/20 GAL. FOAM CELL, DELUGE, HUSKY 3
				MAKE	FOR	152" PUMPER BODY, LADDERS BETWEEN TANK AND BODY
20MAY20	JLA	GSC	PIERCE	MODEL	OSCODA TOWNSHIP FIRE DEPARTMENT	25FEB20
22APR20	JLA	GSC	PIERCE	NO.	OSCODA, MI	27FEB20
REV	DATE	BY	CH	SABER FR	DWG NO.	35123AD

Pierce MANUFACTURING INC.

JOB NO. 35123

SCALE 1:24 DATE

DRAWN BY BST

CHECKED BY EGO

SHEET SIZE D SHEET NO. 1 OF 1