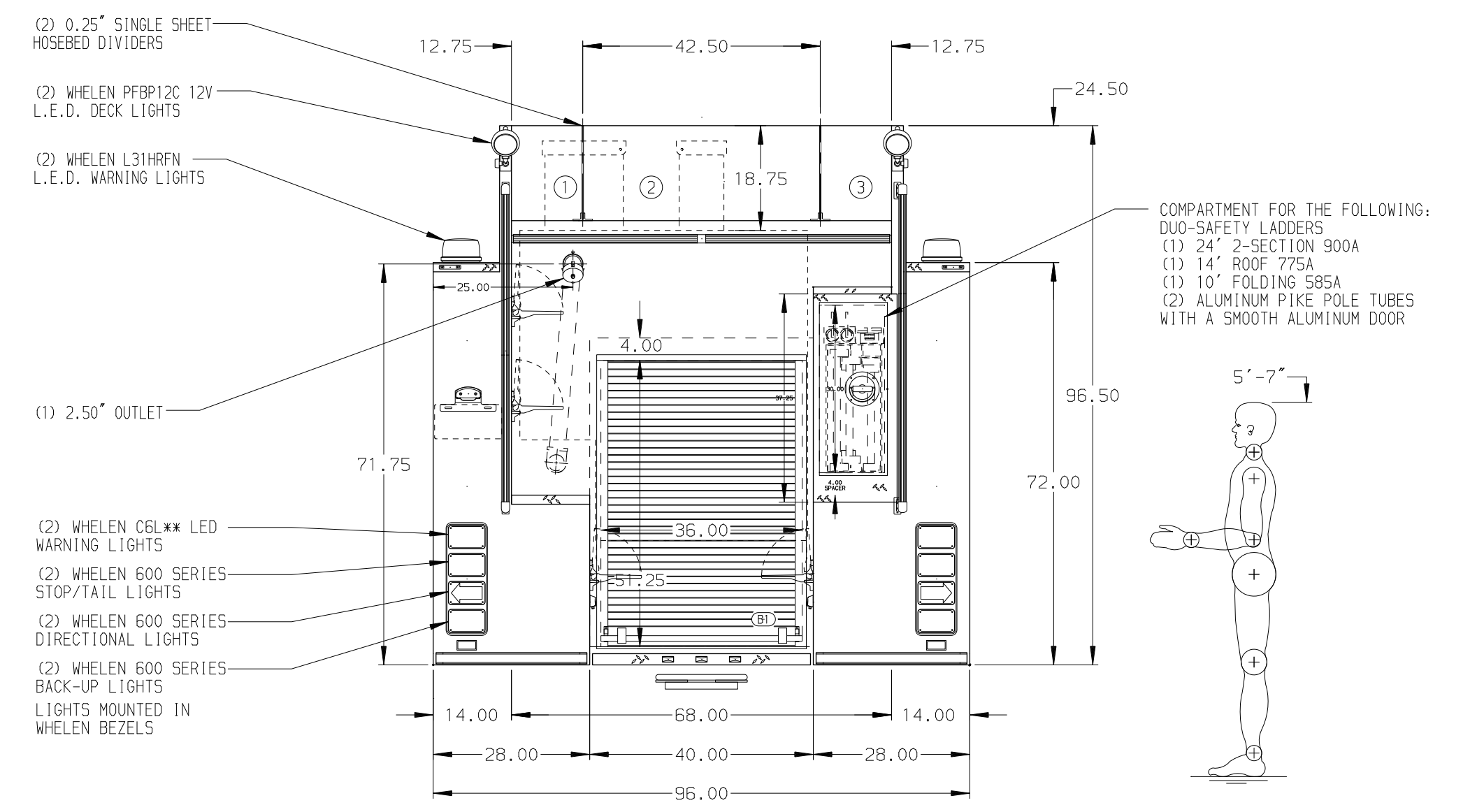
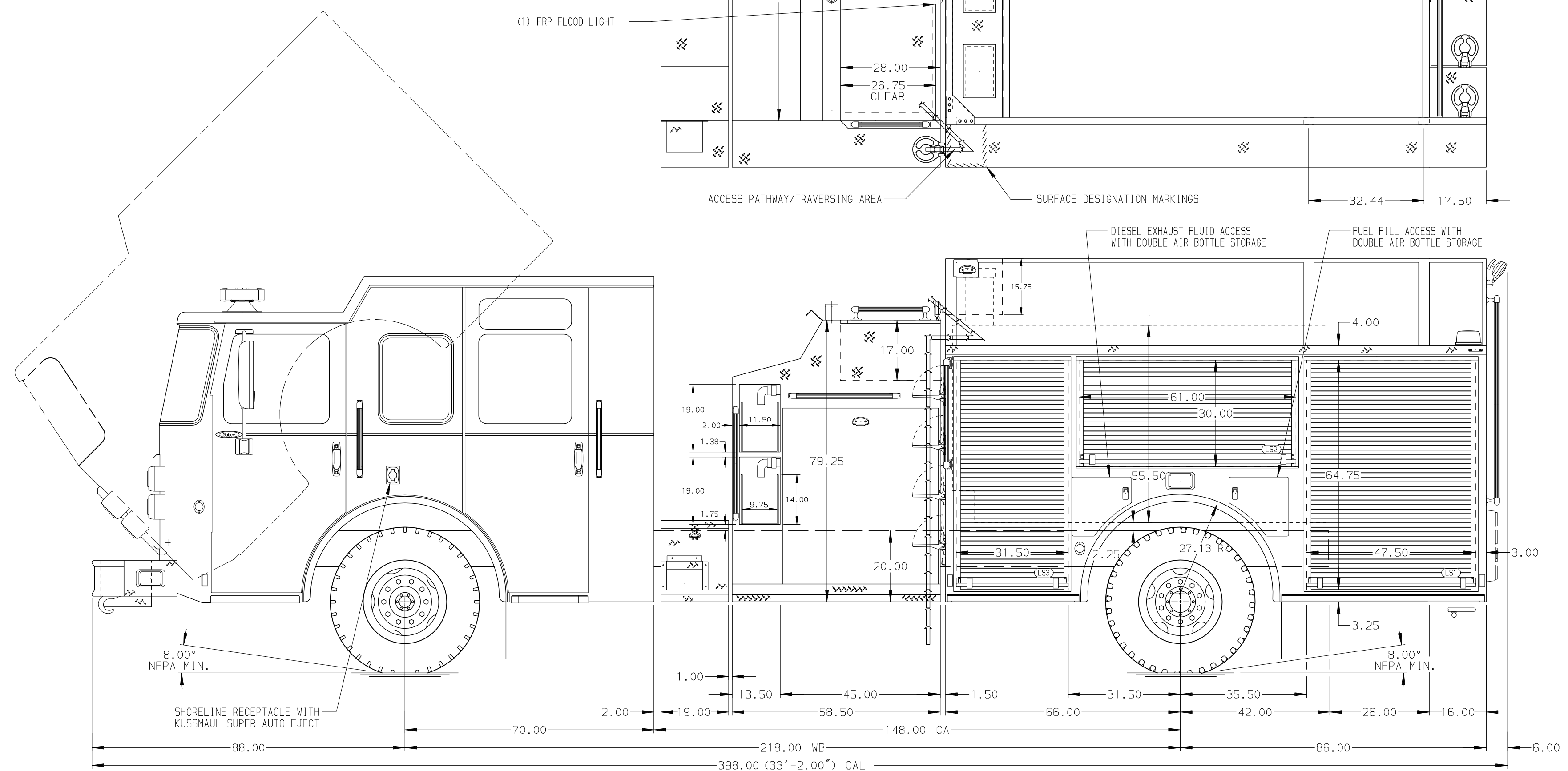


- HOSEBED CAPACITIES**
- ① 500' OF 2.50" D.J. HOSE
  - ② 1000' OF 5.00" D.J. HOSE
  - ③ 500' OF 2.50" D.J. HOSE



**ALUMINUM BODY**

**NOTE**  
DIMENSIONS SHOWN ARE APPROXIMATE AND ARE SUBJECT TO MINOR DEVIATIONS AS MAY OCCUR OR BE NECESSARY IN CONSTRUCTION. MINOR DETAILS NOT SHOWN.

		JOB NO.	34096
		SCALE	DATE
<b>1500-D-1030P, 1000 GAL WATER W/ 30 GAL FOAM SYSTEM 152" PUMPER BODY, TOP CONTROL, LADDERS BESIDE TANK</b>		DRAWN BY	12JUN19
<b>PIERCE FIELD UNIT BRADENTON, FLORIDA</b>		CHECKED BY	12JUN19
<b>DWG NO. 34096AD</b>		SHEET SIZE	SHEET NO.
		D	1 OF 1

CHASSIS DATA	TITLE	1500-D-1030P, 1000 GAL WATER W/ 30 GAL FOAM SYSTEM 152" PUMPER BODY, TOP CONTROL, LADDERS BESIDE TANK
MAKE	FOR	PIERCE FIELD UNIT BRADENTON, FLORIDA
MODEL	DWG NO.	34096AD
REV	DATE	BY
19SEP19	JLA	CAG
		CH