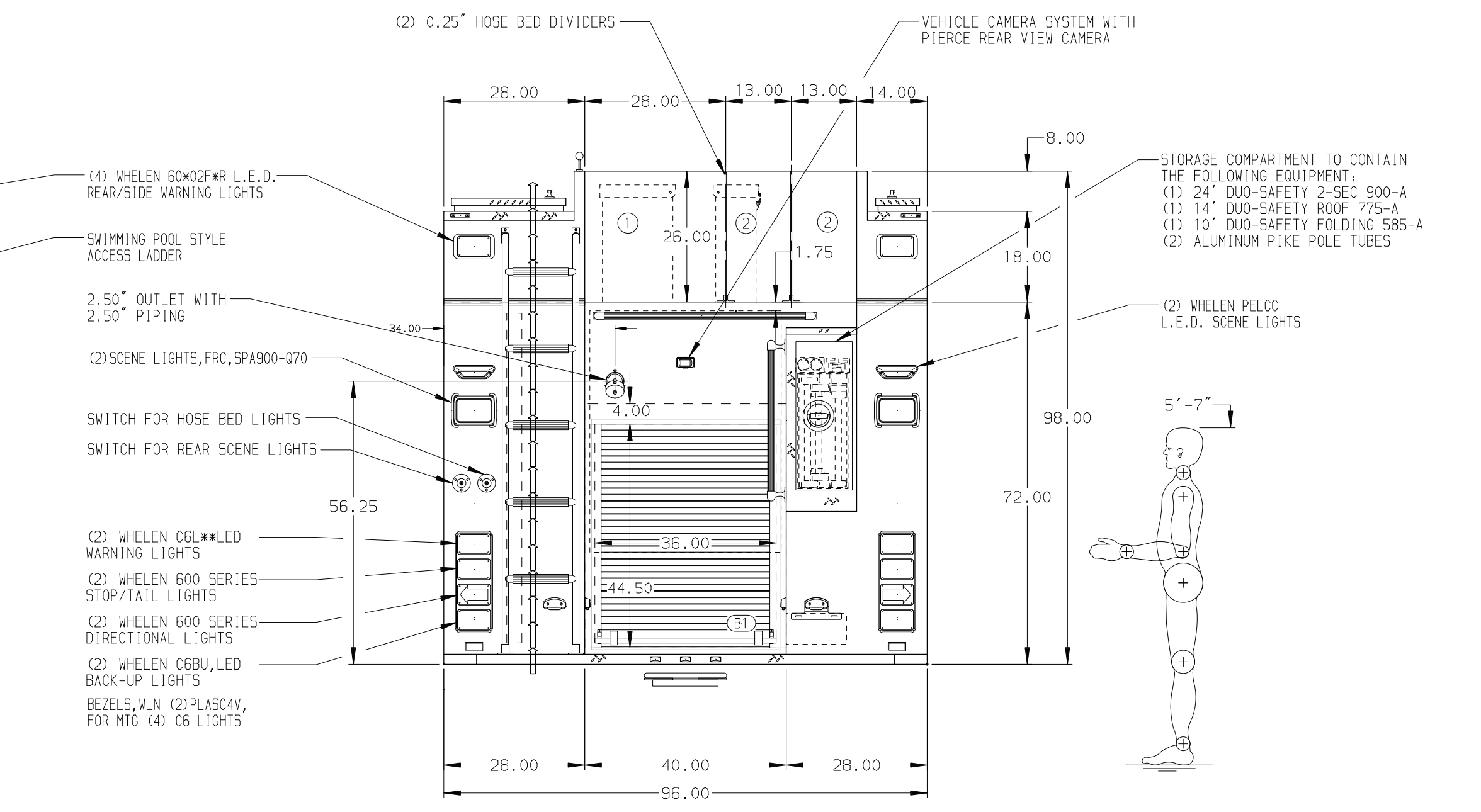
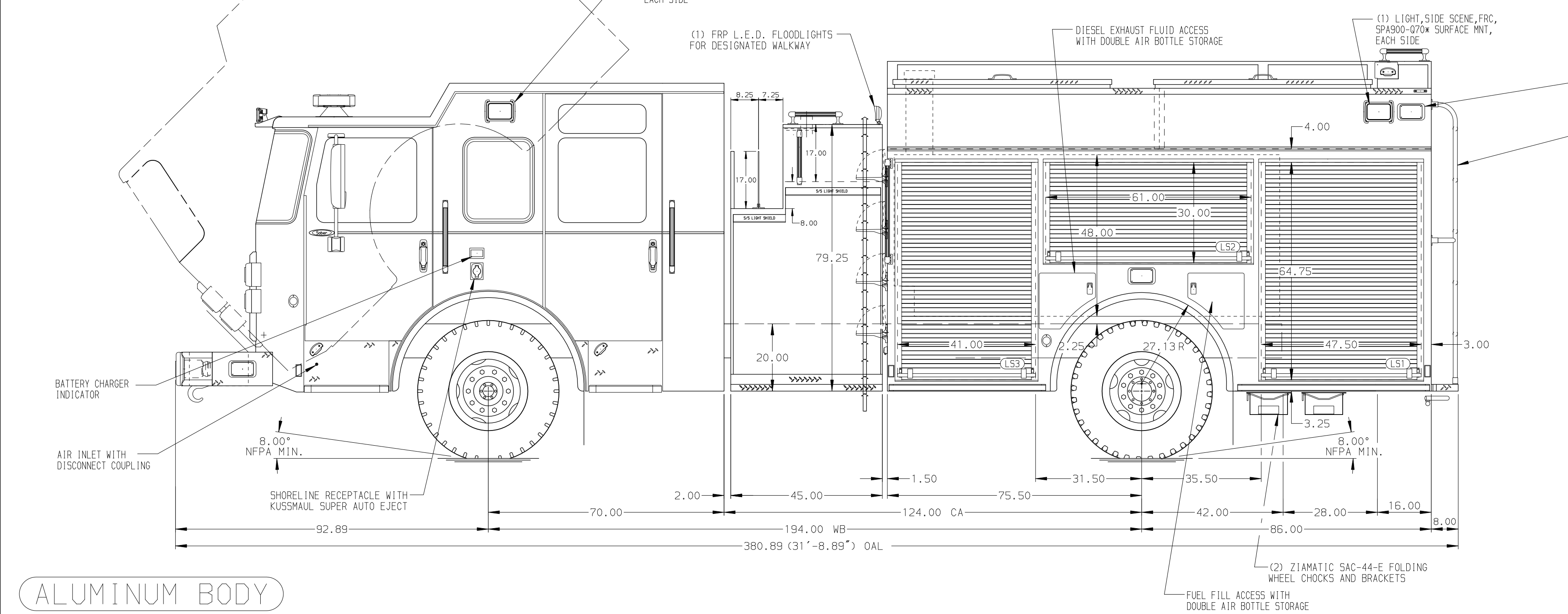


- HOSEBED CAPACITIES
- ① 1000' OF 5.00" D.J. POLY HOSE
  - ② 400' OF 3.00" D.J. POLY HOSE



**ALUMINUM BODY**

NOTE  
DIMENSIONS SHOWN ARE APPROXIMATE AND ARE SUBJECT TO MINOR DEVIATIONS AS MAY OCCUR OR BE NECESSARY IN CONSTRUCTION. MINOR DETAILS NOT SHOWN.

|              |         |                                                                                        |            |          |                  |
|--------------|---------|----------------------------------------------------------------------------------------|------------|----------|------------------|
|              |         | JOB NO.                                                                                | 35486      |          |                  |
|              |         | SCALE                                                                                  | DATE       |          |                  |
| CHASSIS DATA | TITLE   | 1500-D-750 W/20 GAL FOAM CELL, 161" BODY, DELUGE 45" SIDE CONTROLS, (2) 1.5" CROSSLAYS | DRAWN BY   | CRH      | 25JUN20          |
| MAKE         | FOR     | PIERCE FIELD UNIT BRADENTON, FLORIDA                                                   | CHECKED BY | CAG      | 26JUN20          |
| MODEL        | DWG NO. | 35486AD                                                                                | SHEET SIZE | D        | SHEET NO. 1 OF 1 |
| REV          | DATE    | BY                                                                                     | CH         | SABER FR |                  |