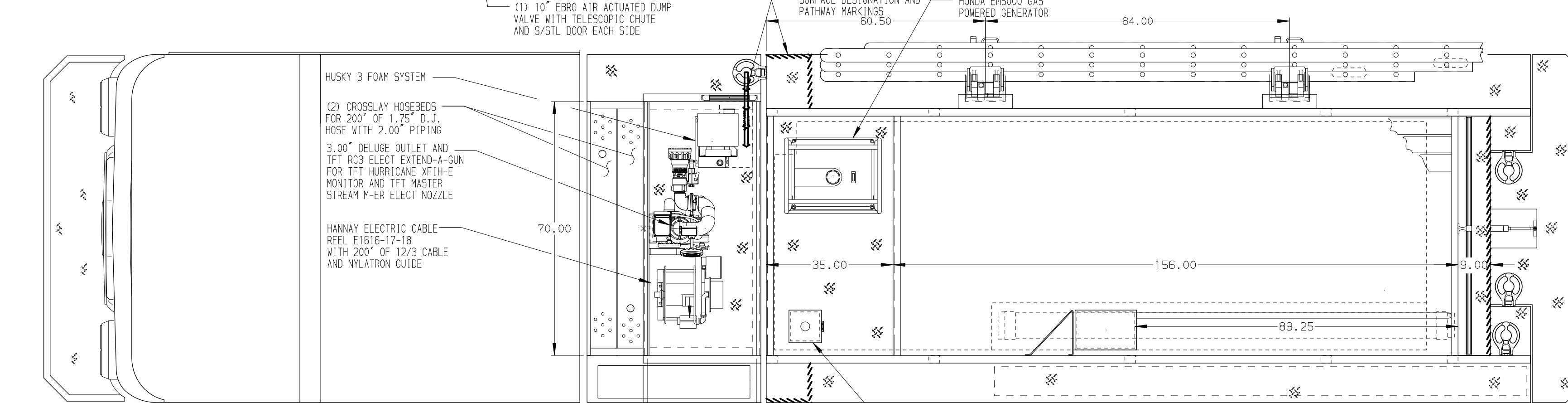
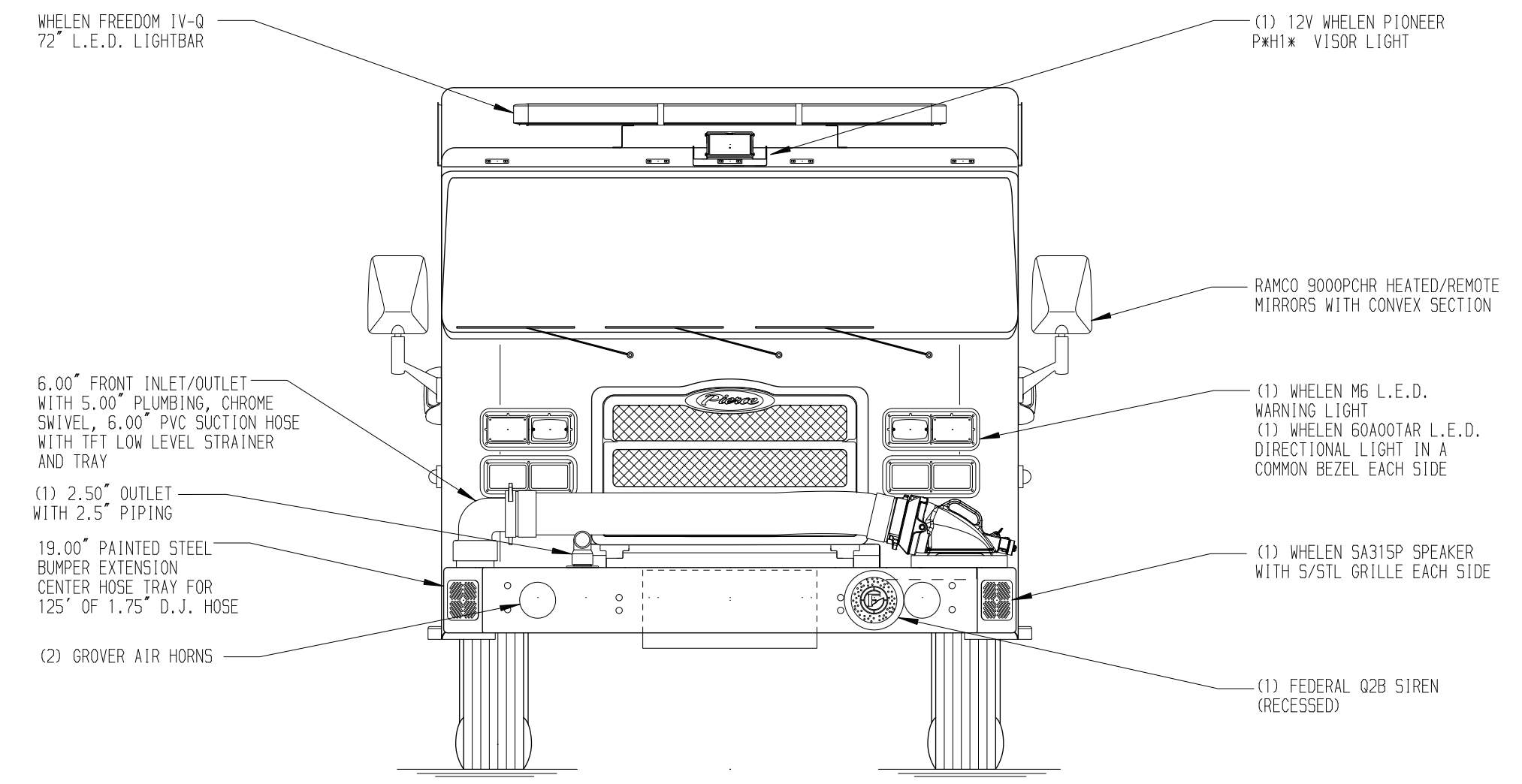
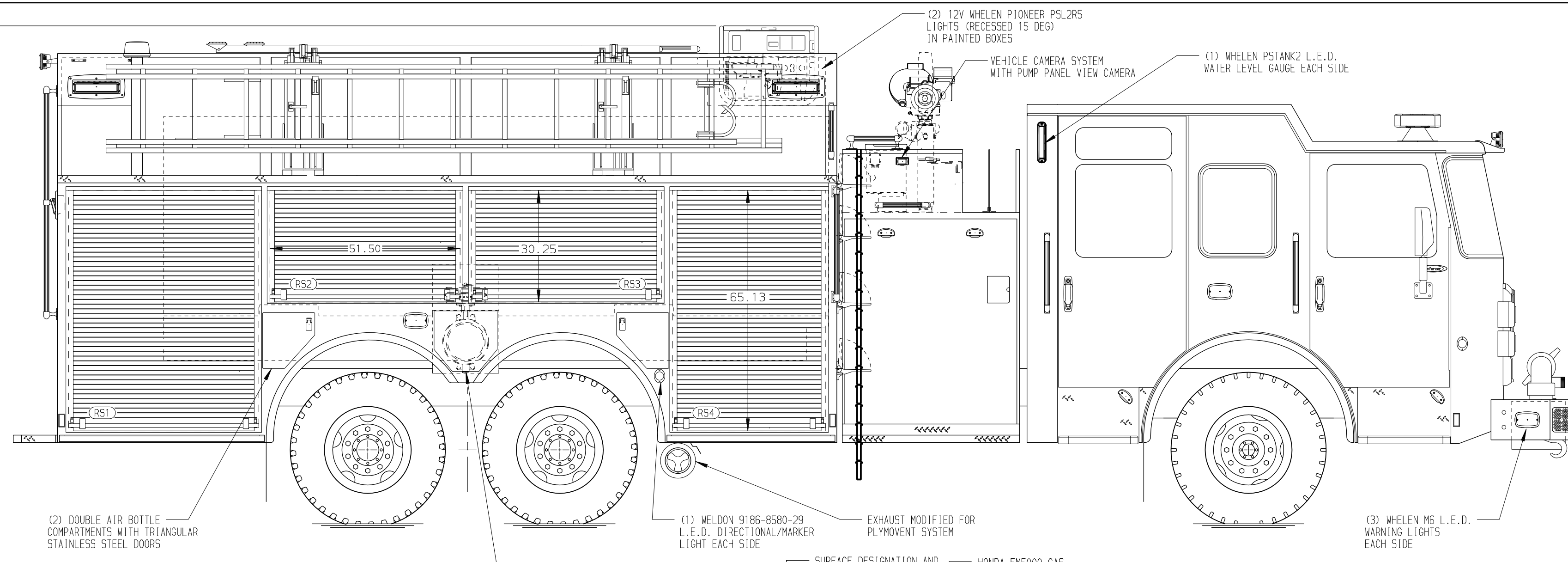
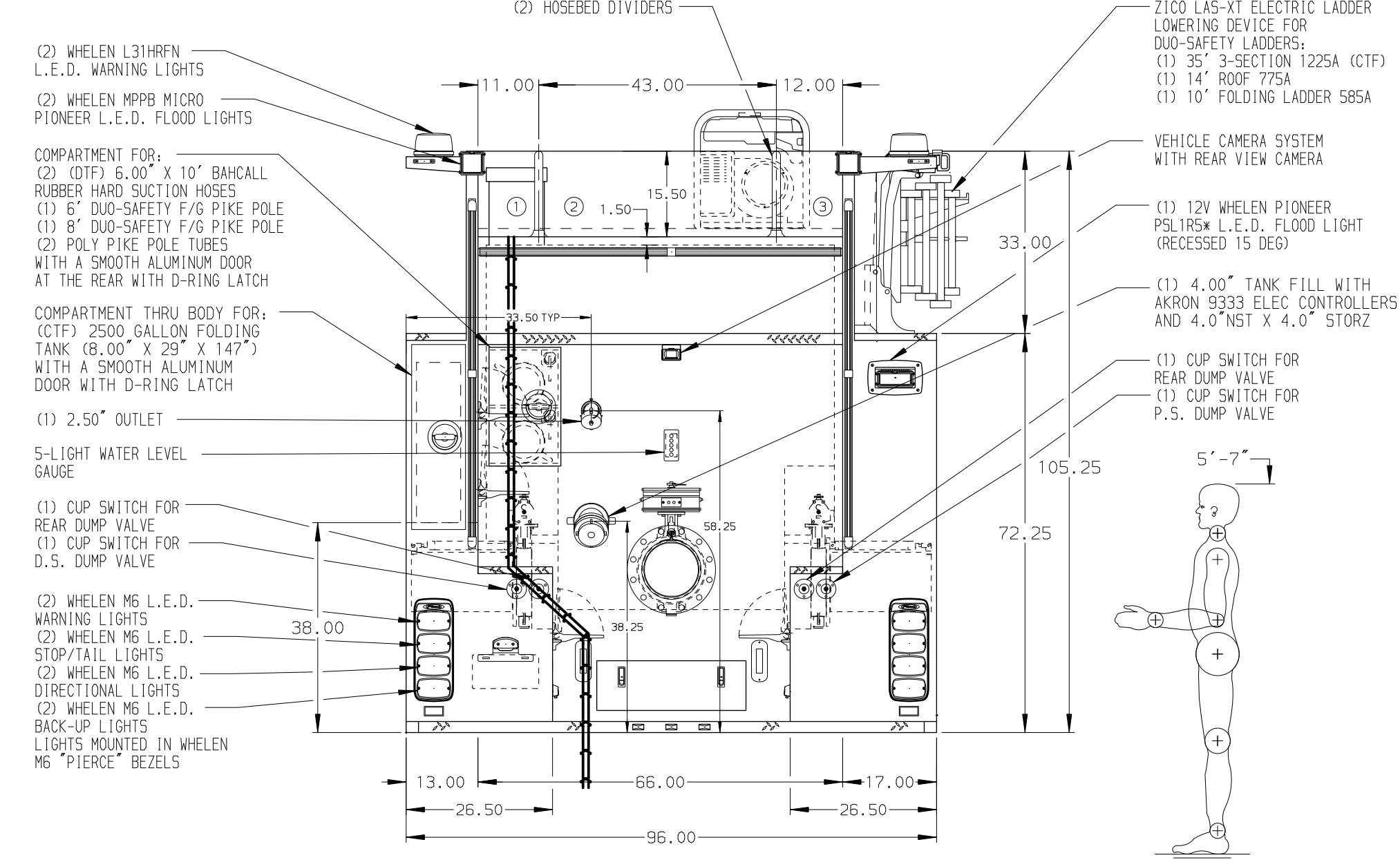
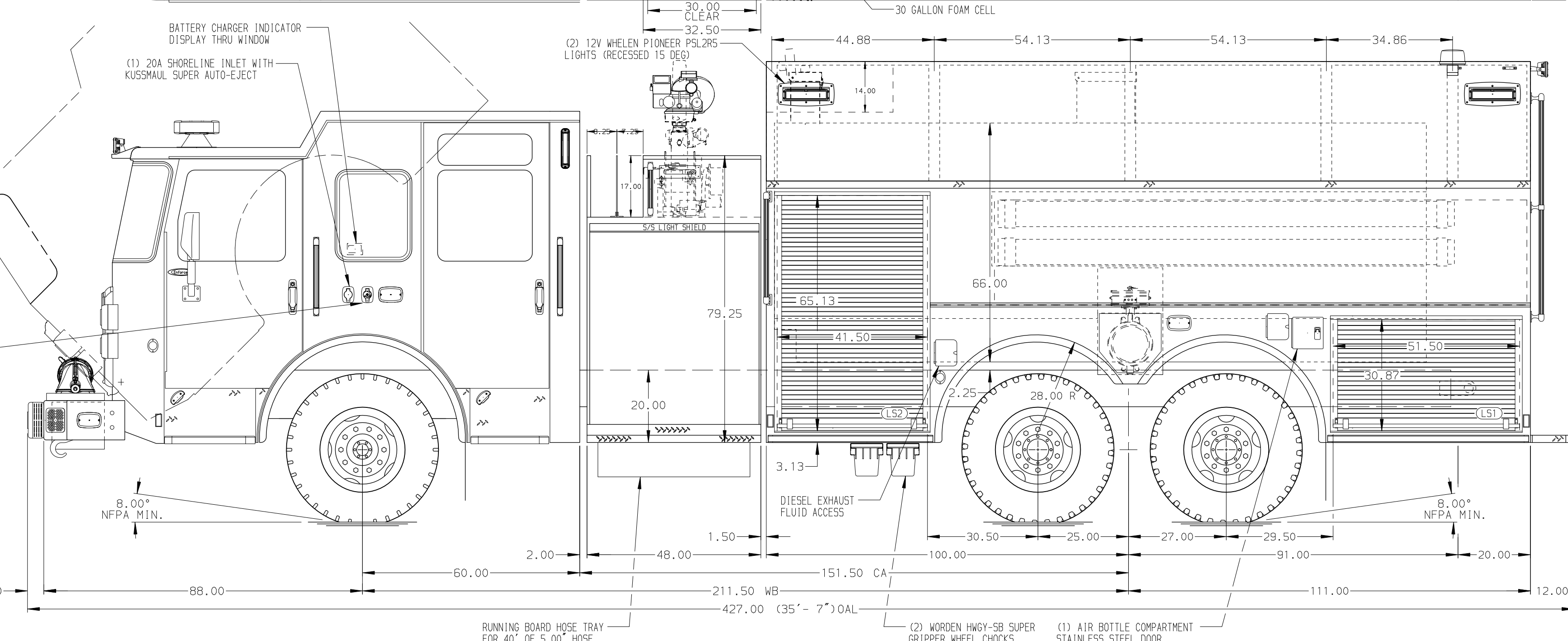


132.50  
(11' - .5")  
APPROX  
O.A.H.



HOSEBED CAPACITIES  
OPEN HOSEBED AREA  
① 1000' OF 5.00\"/>



ALUMINUM BODY

SIDE ROLL AND FRONTAL IMPACT PROTECTION

NOTE  
DIMENSIONS SHOWN ARE APPROXIMATE AND ARE SUBJECT TO MINOR DEVIATIONS AS MAY OCCUR OR BE NECESSARY IN CONSTRUCTION. MINOR DETAILS NOT SHOWN.

1. KUSSMAUL BATTERY CHARGER LOCATED BEHIND DRIVER'S SEAT
2. WHELEN PSL2R5 L.E.D. LIGHTS IN CARGO AREA FOR DESIGNATED WALKWAY
3. CIRCUIT BREAKER PANEL IN COMPARTMENT L52
4. ONE ADJUSTABLE FULL WIDTH/DEPTH SHELF IN COMPARTMENTS R52 & R53; TWO IN L52, R51 & R54
5. TWO 20A, 120V DUPLEX RECEPTACLE LOCATED IN CAB

REV	DATE	BY	CH	ENFORCER
29APR21	LME	PPE		CHASSIS DATA
03MAR21	LME	PPE		MAKE
03FEB21	LME	PPE		PIERCE
20NOV20	JUS	KOU		MODEL

		JOB NO.	35674
		SCALE	DATE
TITLE	2000-D-2500 WATER/30 FOAM, 211\"/>		
FOR	OAKLAND TOWNSHIP FIRE DEPARTMENT ROCHESTER, MICHIGAN		
DWG NO.	35674AD		
DRAWN BY	LME	06NOV20	
CHECKED BY	KOU	12NOV20	
SHEET SIZE	D	SHEET NO.	
		1 OF 1	