

Pumper, PUC

BODY
Pumper, PUC, Aluminum
CHASSIS
Enforcer Chassis, PUC

CHASSIS
AXLE, FRONT, CUSTOM
22,800 Lb TAK-4 Axle

AXLE, REAR
31,000 Lb Meritor Axle

ENGINE
505 HP DD13 Engine

TRANSMISSION
Allison 5th Gen, 4000 EVS P

BUMPER
19" Extended Stainless Steel

CAB
7010 Enforcer Cab, PUC

BODY

WATER TANK
1000 Gallon Poly Water Tank

COMPT, PUMPER, REAR
40.50" FF RollUp Rear Compt w/Tailboard, PUC

COMPT, PUMPER, LEFT SIDE
189" RollUp Full Height & Depth Front & Rear, PUC

COMPT, PUMPER, RIGHT SIDE
189" RollUp Full Height & Depth Front & Rear, PUC

FIRE SUPPRESSION

PUMPHOUSE
Control Zone, PUC

PUMP
1500 GPM Pierce PUC

CROSSLAYS, 1.50"
(2) 1.50", Poly Trays, 200'

CROSSLAYS, 2.50"
(1) 2.50", Poly Tray, 200'
(1) Deadlay, Poly Tray, 200'

GENERATOR
Generator Not Required

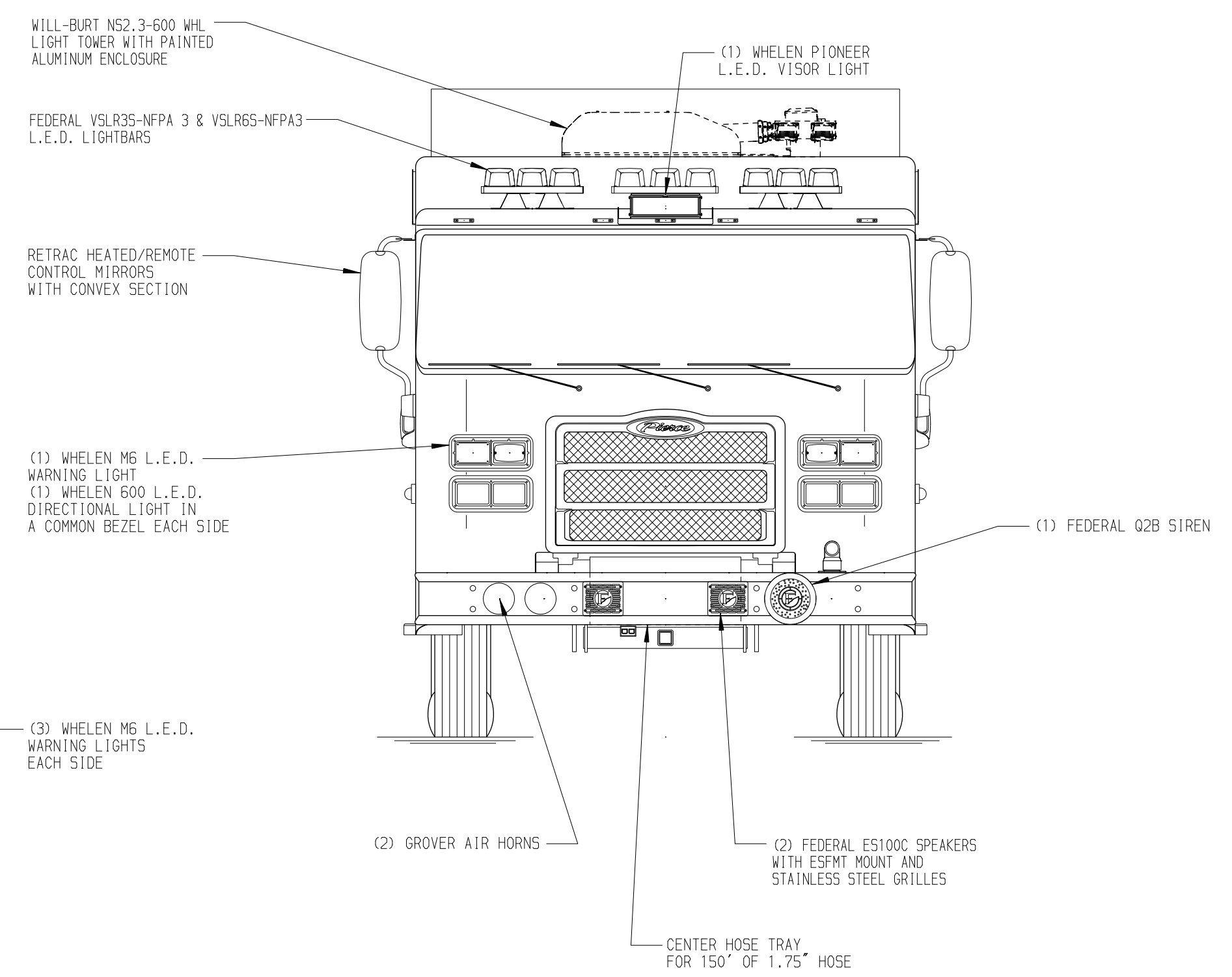
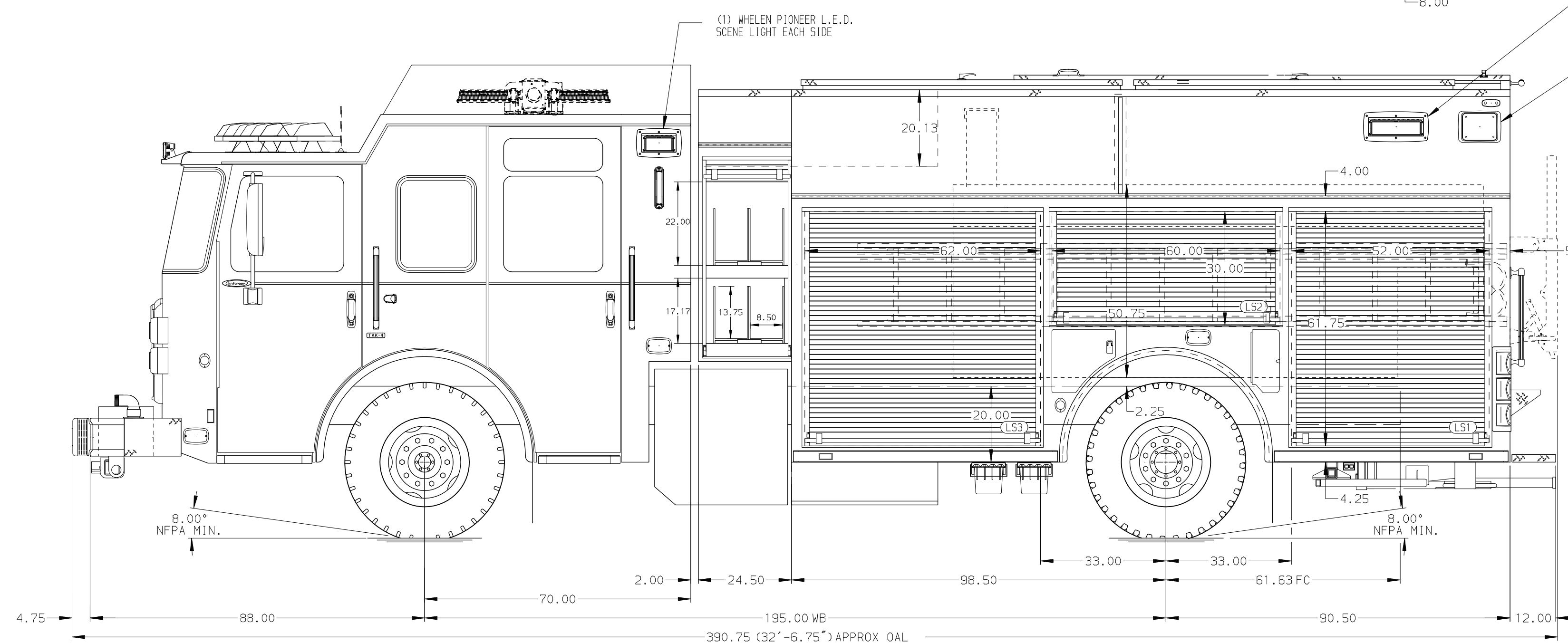
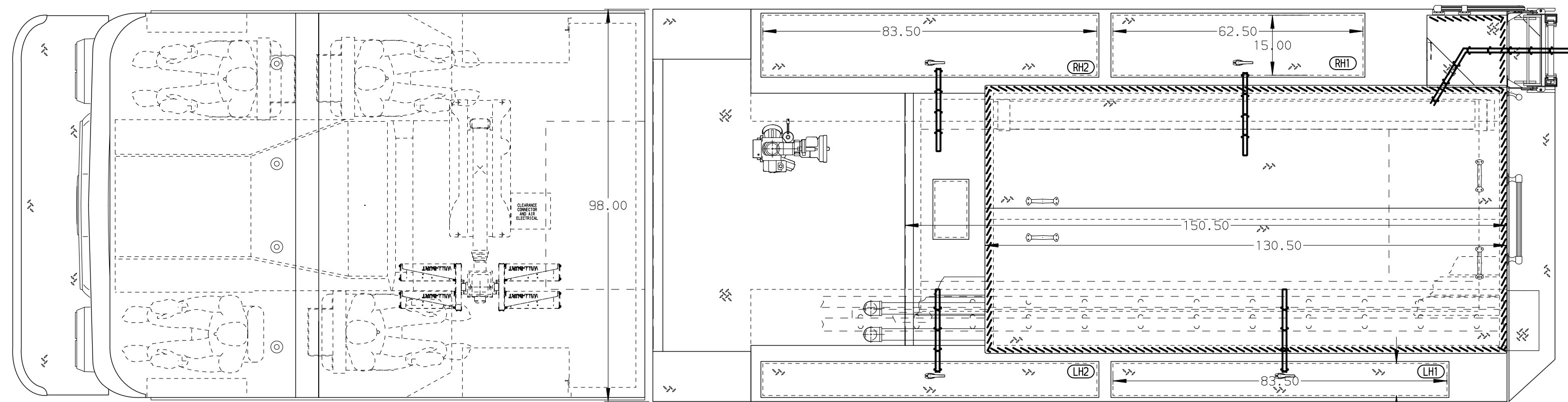
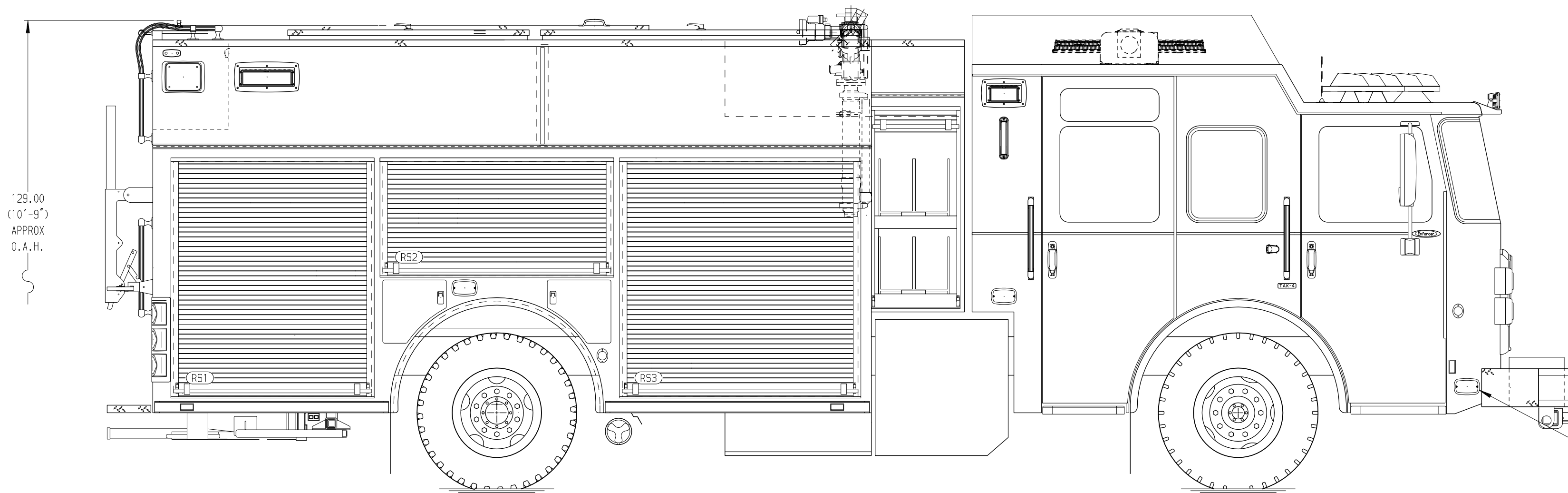
Foam System
Foam System Not Required

Foam Cell
Foam Cell Not Required

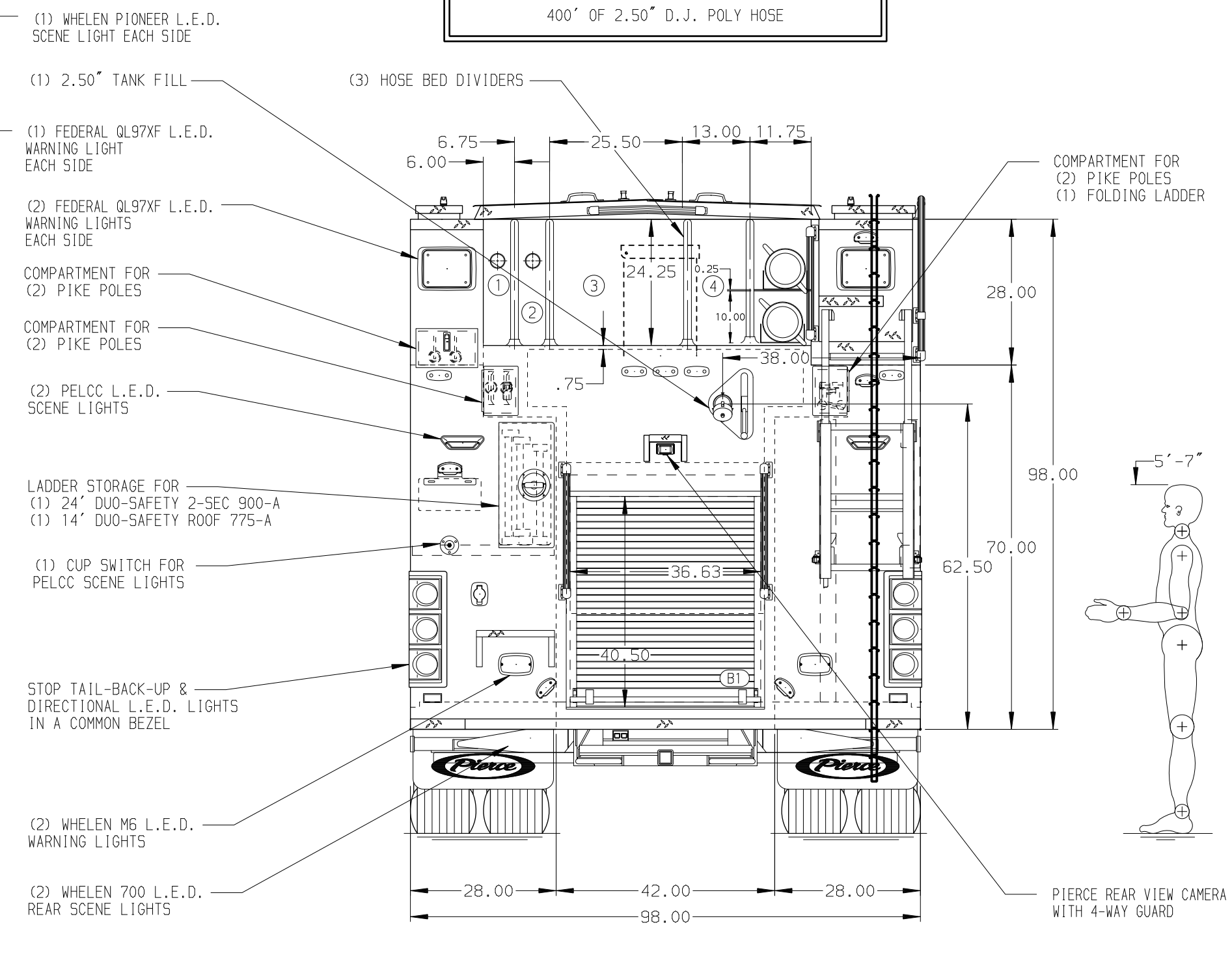
NOTE
DIMENSIONS SHOWN ARE APPROXIMATE AND ARE SUBJECT TO MINOR DEVIATIONS AS MAY OCCUR OR BE NECESSARY IN CONSTRUCTION. MINOR DETAILS NOT SHOWN.

- ONE 2.50" OUTLET WITH 2.50" PIPING AND SWIVEL LOCATED ON TOP BUMPER LEFT SIDE
- SHORELINE RECEPTACLE WITH KUSSMAUL SUPER AUTO-EJECT LOCATED REAR OF TRUCK DRIVERS SIDE
- AIR INLET WITH DISCONNECT COUPLING IN THE DRIVER SIDE STEPWELL
- BATTERY CHARGER LOCATED IN COMPARTMENT PER SHOP ORDER
- BATTERY CHARGE INDICATOR LOCATED ON THE DRIVER SIDE SEAT RISER
- ONE SWING-OUT TOOLBOARD IN COMPARTMENT PER SHOP ORDER

129.00
(10'-9")
APPROX
O.A.H.



HOSEBED CAPACITY	
BED 1	200' OF 2.50" D.J. POLY HOSE
BED 2	200' OF 2.50" D.J. POLY HOSE
BED 3	1000' OF 5.00" D.J. POLY HOSE
BED 4	400' OF 2.50" D.J. POLY HOSE



		JOB NO.	36087
		SCALE	01-02
Pierce MANUFACTURING INC.		DATE	
		DRAWN BY	MMF
PIERCE		CHECKED BY	COL
		SHEET NO.	1 OF 1
TITLE	Pierce PUC Pumper Approval Drawing	DWG NO.	36087AD
FOR	Comstock Fire Department		
DATE	21JUN21	BY	MMF
DATE	05MAY21	BY	MMF
DATE		BY	SMA
DATE		BY	SMA
DATE		BY	CH