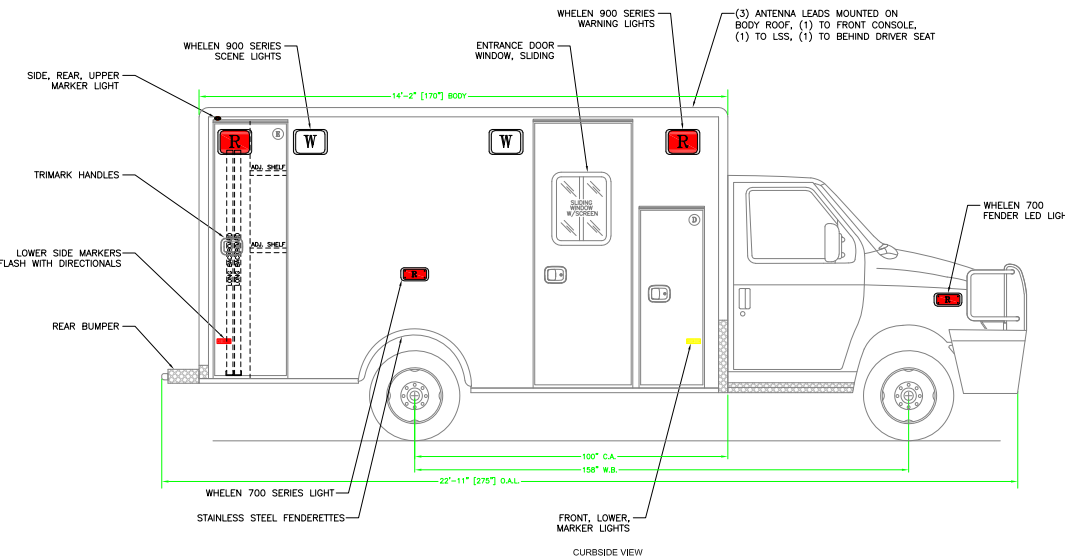
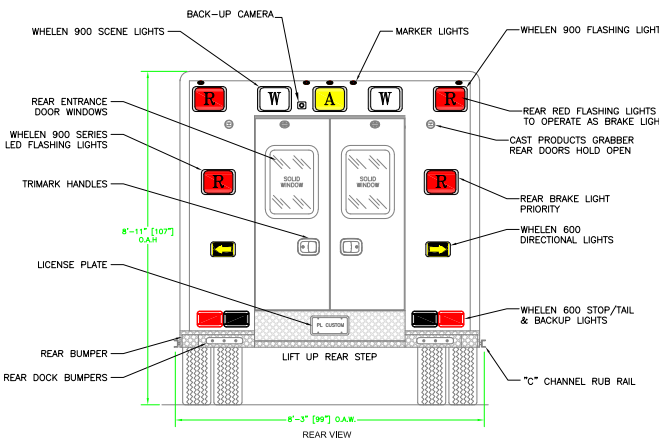
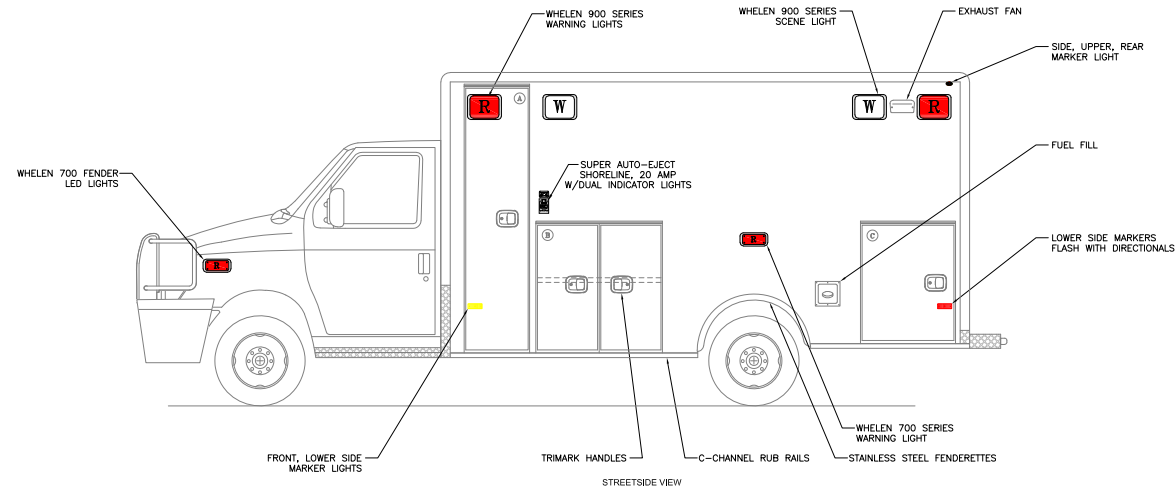
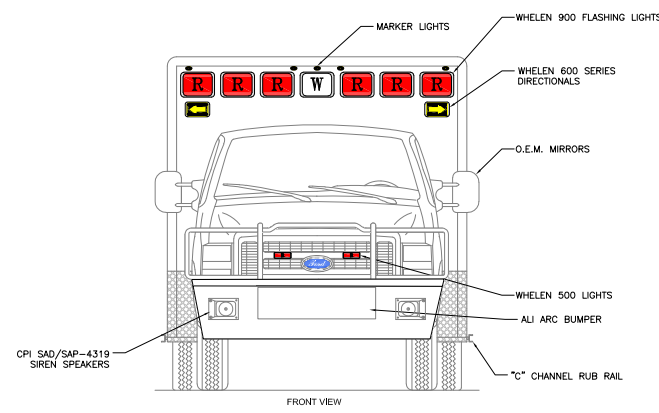


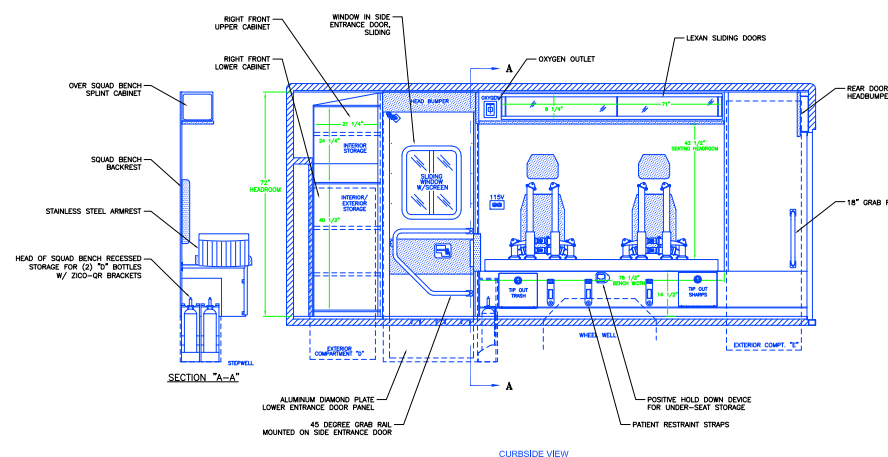
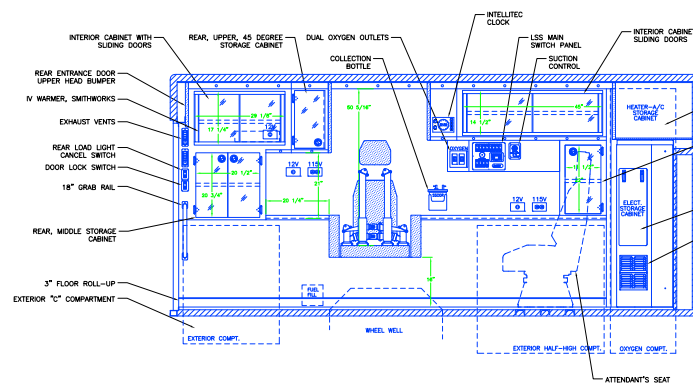
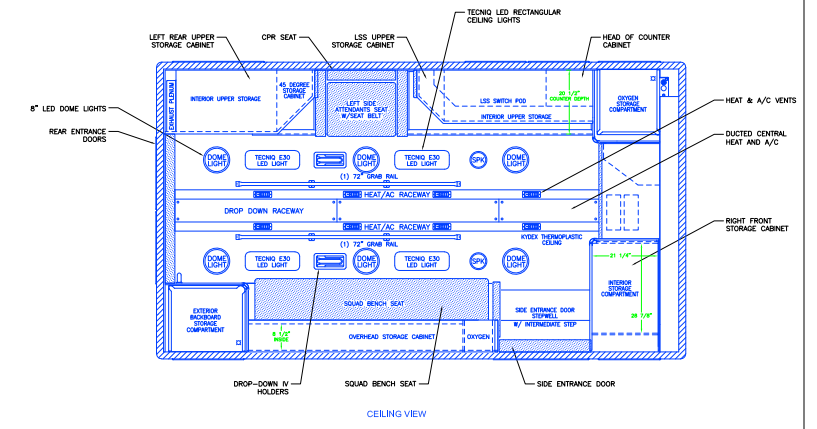
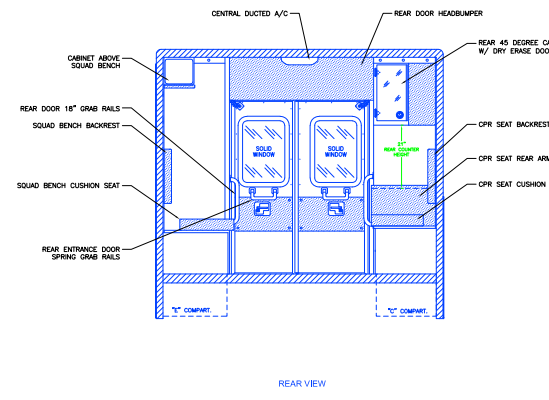
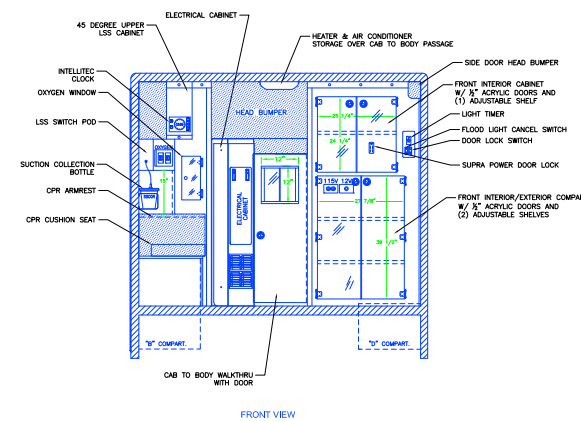
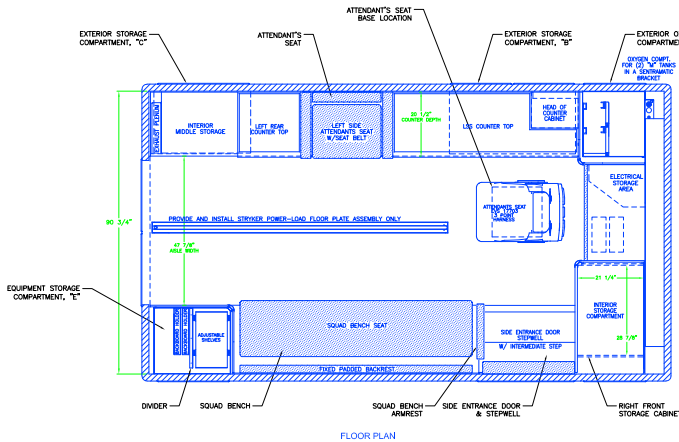
CUSTOM DESIGNED FOR KALKASKA EMS BY P.L. CUSTOM EMERGENCY VEHICLES



OPENING DESCRIPTIONS				
	WIDTH	HEIGHT	DEPTH	PURPOSE
(A)	20	83	21	OXYGEN STORAGE
(B)	40	39	20	EXTERIOR STORAGE
(C)	31	36	20	EXTERIOR STORAGE
(D)	20	55	33" ABOVE FLOOR 20" BELOW FLOOR	INTERIOR/EXTERIOR ACCESS STORAGE
(E)	24 1/2	80	21	BACKBOARD STORAGE
	29	80		SIDE ENTRANCE DOOR
	44 1/4	58		REAR ENTRANCE DOORS
ALL DIMENSIONS APPROXIMATE				

INTERIOR DIMENSIONS
HEIGHT 72"
LENGTH 165"
WIDTH 90-3/4"

EXTERIOR DIMENSIONS
HEIGHT 107" (+/-2)
LENGTH 170"
WIDTH 99"



- NOTES:
- 1.) DRAWINGS ARE FOR REPRESENTATIONAL PURPOSES ONLY.
 - 2.) ALL DIMENSIONS SHOWN ARE APPROXIMATE.
 - 3.) EXTERIOR COMPARTMENT DIMENSIONS REFLECT WALL TO WALL MEASUREMENTS. PASS THROUGH OPENINGS WILL BE SMALLER.
 - 4.) INTERIOR CABINET DIMENSIONS REFLECT THE CABINET OPENING. PASS THROUGH OPENINGS WILL BE SMALLER.
 - 5.) DIMENSIONS FOR OVERALL HEIGHT AND OVERALL LENGTH ARE APPROXIMATE UNTIL THE CHASSIS IS BUILT AND RECEIVED AT OUR FACTORY.

TITLE	DATE	BY
A	0002	3/24/22

DWG. REV.	QW. REV.	DATE	BY



"NOTICE"
This drawing and data thereon shall not be duplicated, used or disclosed to others for procurement or manufacturing purposes, except as otherwise authorized by contract, without written permission of P.L. CUSTOM BODY & EQUIPMENT CO., INC. We reserve the right to make changes at any time, without notice. In materials, equipment & specifications. Written specifications take precedence over drawings which are for clarity only. All reproductions shall bear this notice.